



Japan America Society of Southern California

presents

# Women's Leadership Counts



## ***From Locker Room to C-Suite*** **6th Annual Conference - FACT SHEET**

### MODERATOR



**Royanne Dol**

Global Legal, Ethics & Compliance Adviser  
for Yamaha Corporation

### SPEAKERS



**David Hendley**

Vice President  
Export Automobile Sales,  
American Honda Motor Co., Inc.  
Former Professional Football Player



**Kelly Inouye-Perez**

UCLA Head Softball Coach



**Janelle Sasaki**

Director, EY Japan  
EY Women Athletes Business Network,  
Japan Area Leader



**Penny Toler**

Executive Vice President &  
General Manager  
Los Angeles Sparks

### **Women's Leadership Counts Initiative**

In 2014, the Japan America Society of Southern California's Women's Leadership Counts Initiative (WLCI) was created as a first-of-its-kind initiative to provide a platform for women in business on both sides of the Pacific to engage in professional and leadership development.

Together with our partner organizations, business executives and community leaders, the WLCI will create a network that inspires action and moves the needle on women's leadership.

### **WLCI's Mission Statement:**

To provide an inclusive and diverse platform for women in business to engage in professional and global leadership development

### **From Locker Room to C-Suite**

Increasing evidence shows that playing sports can transfer into your professional career, helping you become a better and more influential leader.

Playing sports is often considered a male thing, but the expectation that sports can help your career holds for women as well as men. In a 2014 report of women executives by Ernst and Young (EY) Women Athletes Business Network and espnW, 74% said a background in sport can help accelerate a woman's career. In another report, they found an overwhelming correlation between athletic and business success; 94% of women in the C-suite played sports and 80% of female *Fortune* executives played competitive sports.

Against the backdrop of the 2020 Tokyo Olympics, this year's conference will address the character traits and attributes that are common among great athletes and business leaders. The speakers will highlight leadership qualities that are both effective on and off the field, and share skills learned in athletics that have a direct workplace crossover.

## 6<sup>th</sup> Women's Leadership Counts Annual Conference

**Date** Thursday, November 7, 2019

**Time** 2:30pm – 5:30pm Conference, 5:30pm – 6:30pm Networking Reception

**Venue** InterContinental Los Angeles Century City at Beverly Hills (Los Angeles, CA)

**Panelists** David Hendley, Vice President, Export Automobile Sales, American Honda Motor Co., Inc.,  
Former Professional Football Player  
Kelly Inouye-Perez, UCLA Head Softball Coach  
Janelle Sasaki, Director, EY Japan, EY Women's Athletes Business Network, Japan Area  
Leader  
Penny Toler, Executive Vice President & General Manager, Los Angeles Sparks

**Moderator** Royanne Doi, Global Legal, Ethics & Compliance Adviser for Yamaha Corporation

**Who Should Attend** Current and future corporate, business, academic, non-profit and entrepreneurial *women and men* leaders who value the U.S-Japan collaboration and wish to expand their networks.

### **Why You Should Attend**

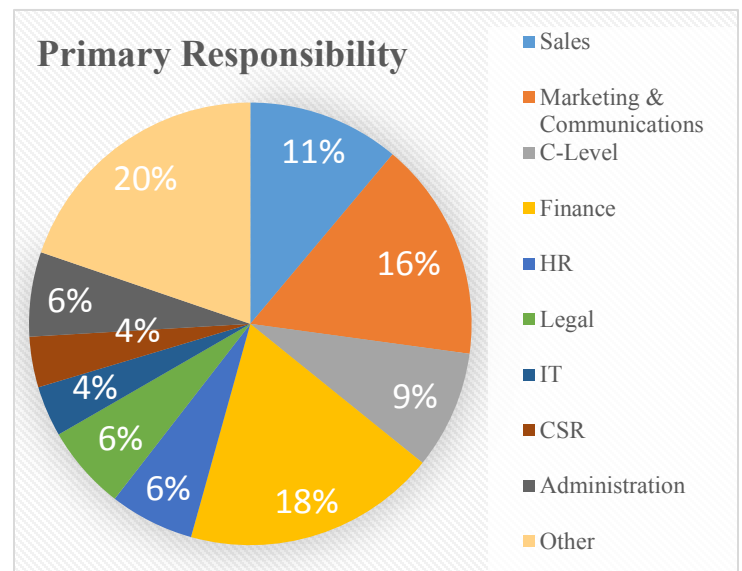
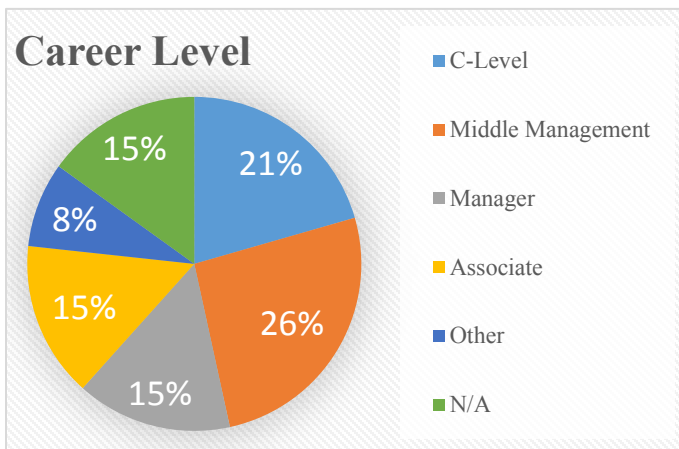
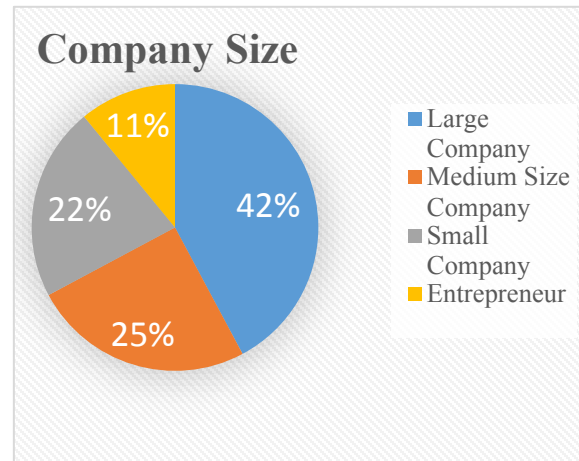
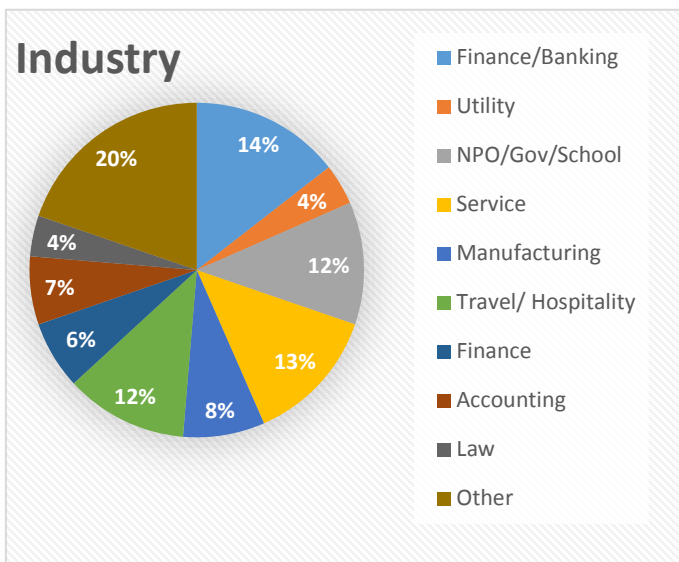
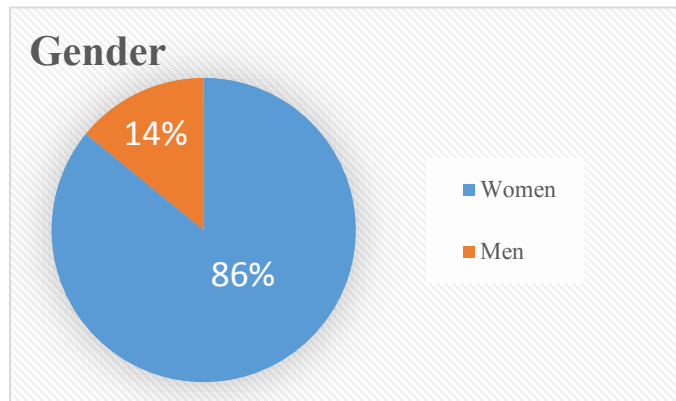
- **LEARN from global leaders** - Understanding the culture of the parent company, management, or client from Japan or overseas is key to having a successful career
- **DISCOVER your potential** - Build leadership and management skills and navigate through unique corporate culture in a professional environment
- **INVEST in yourself** – Exchange ideas as well as challenges you are facing with peers and mentors, and learn tactics to advance your career
- **BUILD your professional network** – Meet a diverse group of women and men representing a wide variety of industries

**Admission** \$60 Members  
\$80 Guests of Members and Cooperating Organization Members  
\$90 Non-members  
\$110 Admission and New Membership Bundle  
Table Sponsors: \$600 Members, \$800 Non-Members

**More Information** [www.jas-socal.org/Women](http://www.jas-socal.org/Women)

# Women's Leadership Counts

## 2018 Annual WLC Conference DEMOGRAPHICS



## Women's Leadership Counts Conference Past Speakers

(Titles indicate position at the time of participation)



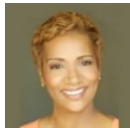
**Michiko Achilles**

Managing Corporate Officer, Vice President and Head of Human Resources  
SAP Japan Co., Ltd.



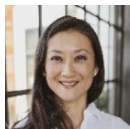
**Betsy Berkhemer-Credaire**

President  
Berkhemer Clayton, Inc.



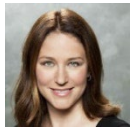
**Bonnie Boswell**

Executive Producer/Reporter



**Ellen Chen**

Co-Founder & President  
Mendocino Farms



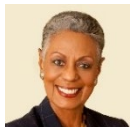
**Maria Faillace**

Executive Vice President of Production  
CBS Films



**Renee White Fraser, Ph.D.**

CEO  
Fraser Communications



**Bonnie G. Hill, Ed. D.**

President, B. Hill Enterprises LLC  
Lead Director, Board of Directors, The Home Depot, Inc.  
Director, AK Steel Holding Corporation, California Water Service Group, The  
Rand Corporation and Yum Brands, Inc. (KFC, Taco Bell, Pizza Hut)



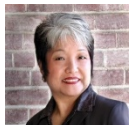
**Lynne A. Humenik**

President & CEO, Hitachi Cable America Inc.  
CEO, Hitachi Cable Queretaro



**Kaori Iida**

Los Angeles Bureau Chief, NHK (Japan Broadcasting Corp.)  
Former Senior Economics Correspondent, Washington, D.C. News Bureau, NHK



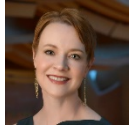
**Kay Iwata**

Founder & President  
K. Iwata Associates, Inc.



**Mari Miyoshi**

President, Sumitomo Realty and Development U.S.A.  
Owner of InterContinental Hotel Los Angeles Century City *at Beverly Hills*  
President, Sumitomo Fudosan Hotel Villa Fontaine Co., Ltd. Japan



**Rachel Moore**

President & CEO  
The Music Center



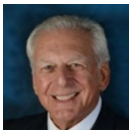
**Yoko Narahashi**

President, United Performer Studio  
Producer, Director, Casting Director and Lyricist



**Lori Nickel**

Vice President, Senior Diversity Consultant  
MUFG Union Bank, N.A.



**Robert A. Rivero**

CEO, RAR Management Services LLC  
Retired National Senior Partner, KPMG LLP



**Kaori Sasaki**

Founder & CEO, ewoman, Inc.  
Founder & CEO, UNICUL International, Inc.  
Founder and Chair, International Conference for Women in Business



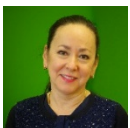
**Adrianna Simmons**

Solutions Marketing Manager, Industrial IoT  
Hitachi Vantara



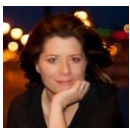
**Roderick M. Sherwood III**

Managing Partner, Co-Founder, Co-Chairman, CEO,  
Cinemoi North America LLC  
Co-Chairman, CineWorld, LLC  
Chairman, Multivision Media International, LLC



**Rona Tison**

Senior Vice President, Corporate Relations  
ITO EN (North America) INC.



**Kelly Keenan Trumbour**

Founding Venture Partner, NextGen Venture Partners  
Founder, See Jane Invest



**Julia Wada**

Group Vice President, HR and Business Technology Solutions,  
Toyota Financial Services  
Director, Japan America Society of Southern California



**Denita Willoughby**  
Vice President, Supply Management and Logistics,  
Southern California Gas Company

**About Japan America Society of Southern California**

JASSC is a membership organization founded in 1909 to build economic, cultural, governmental and personal relationships between the people of Japan and America. It has grown to become the West Coast’s premier educational and public affairs forum dedicated to the U.S.–Japan relationship. It is also the second largest of thirty-seven Japan America societies in the United States. JASSC is a qualified 501(c)(3) nonprofit, charitable and educational organization and it is supported by 140 Japanese and American corporate members and more than 2,000 individual members. [www.jas-socal.org](http://www.jas-socal.org)  
(Tax ID 95-2021853)



@jas.socal

(Join our Women’s Leadership Conference Group: <https://www.facebook.com/groups/womensleadershipcounts/>)



@jassocal



Japan America Society of Southern California (Company)



Japan America Society of Southern California