



Japan America Society of Southern California

presents

Women's Leadership Counts

Impact Leadership in the New Normal – VUCA World **5th Annual Conference - FACT SHEET**

Women's Leadership Counts Initiative

In 2014, the Japan America Society of Southern California's Women's Leadership Counts Initiative (WLCI) was created as a first-of-its-kind initiative to provide a platform for women in business on both sides of the Pacific to engage in professional and leadership development.

Together with our partner organizations, business executives and community leaders, the WLCI will create a network that inspires action and moves the needle on women's leadership.

Impact Leadership in the New Normal – VUCA World

Originally introduced in the 1990s by the US Army War College to describe a new world of military engagement, VUCA is an acronym for Volatility, Uncertainty, Complexity and Ambiguity. The VUCA concept also resonates with an increasing number of executives who are facing the constantly changing challenges brought on by politics, economics, society and technology. What this environment requires is truly strategic leaders—both women and men—who can adapt to changing conditions and navigate this uncharted terrain to be effective. To maximize global and diverse talent, leaders must be innovative, collaborative, decisive, adaptive and creative. Our speakers will share their success stories and challenges to survive and thrive in a VUCA world.

5th Women's Leadership Counts Annual Conference

Date	Thursday, November 8, 2018
Time	2:30pm – 5:30pm Conference, 5:30pm – 6:30pm Networking Reception
Venue	InterContinental Los Angeles Century City at Beverly Hills (Los Angeles, CA)
Keynote Speaker	Renee White Fraser, Ph.D., Founder & CEO, Fraser Communications
Panelists	Lynne Humenik, President and CEO, Hitachi Cable America Inc. Roderick M. Sherwood III, CEO, Cinemoi North America LLC Denita Willoughby, Vice President, Supply Management and Logistics, Southern California Gas Company

Who Should Attend Current and future corporate, business, academic, non-profit and entrepreneurial **women and men** leaders who value the U.S-Japan collaboration and wish to expand their networks.

Why You Should Attend

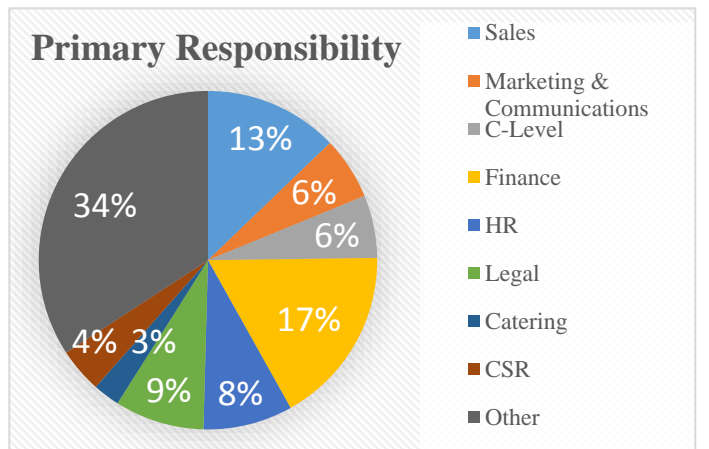
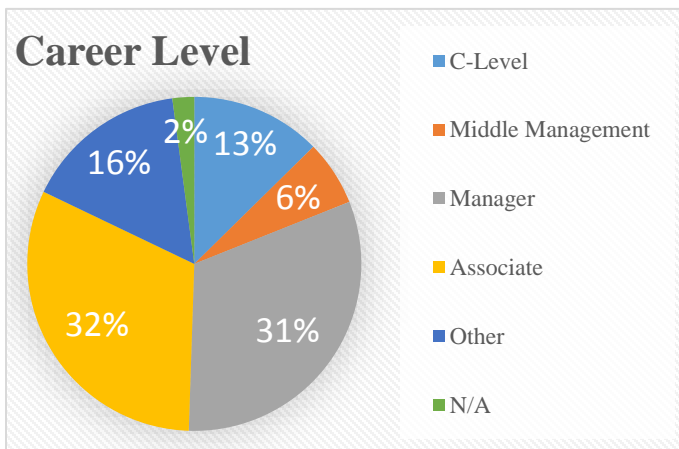
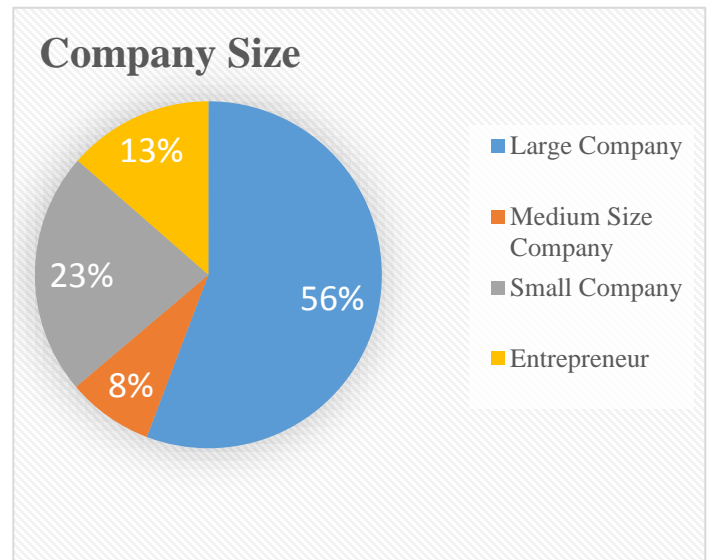
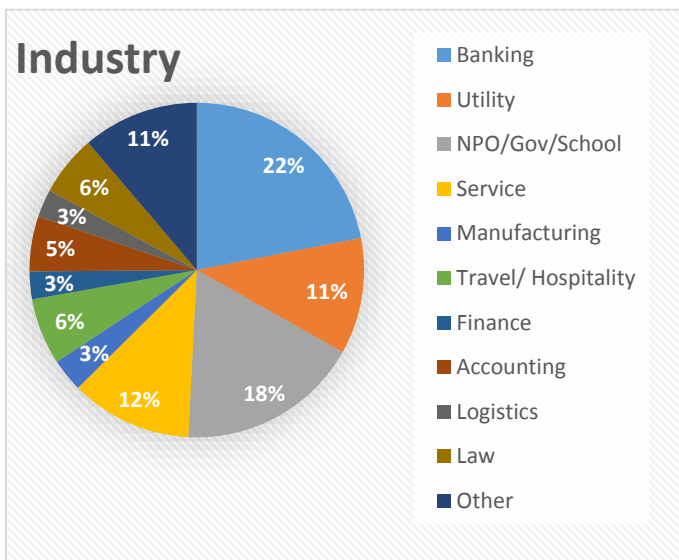
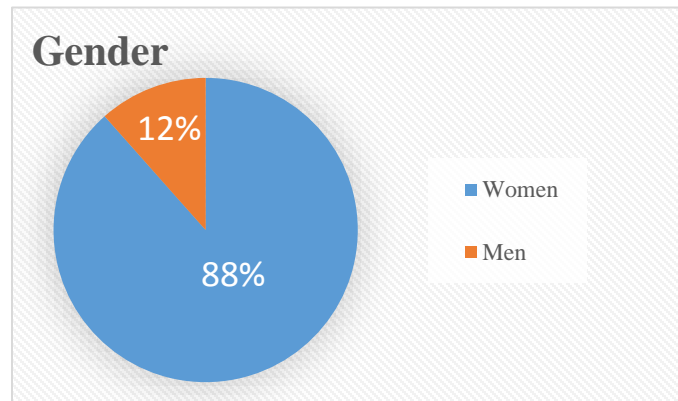
- **LEARN from global leaders** - Understanding the culture of the parent company, management, or client from Japan or overseas is key to having a successful career
- **DISCOVER your potential** - Build leadership and management skills and navigate through unique corporate culture in a professional environment
- **INVEST in yourself** – Exchange ideas as well as challenges you are facing with peers and mentors, and learn tactics to advance your career
- **BUILD your professional network** – Meet a diverse group of women and men representing a wide variety of industries

Admission Individuals: \$60 Members, \$75 Non-members
Table Sponsors: \$600 Members, \$750 Non-Members

More Information www.jas-socal.org/Women

Women's Leadership Counts

2017 Annual WLC Conference DEMOGRAPHICS



Women's Leadership Counts Conference Past Speakers

(Titles indicate position at the time of participation)



Michiko Achilles

Managing Corporate Officer, Vice President and Head of Human Resources
SAP Japan Co., Ltd.



Betsy Berkhemer-Credaire

President
Berkhemer Clayton, Inc.



Bonnie Boswell

Executive Producer/Reporter



Ellen Chen

Co-Founder & President
Mendocino Farms



Maria Faillace

Executive Vice President of Production
CBS Films



Renee White Fraser, Ph.D.

Founder & CEO
Fraser Communications



Bonnie G. Hill, Ed. D.

President, B. Hill Enterprises LLC
Lead Director, Board of Directors, The Home Depot, Inc.
Director, AK Steel Holding Corporation, California Water Service Group, The
Rand Corporation and Yum Brands, Inc. (KFC, Taco Bell, Pizza Hut)



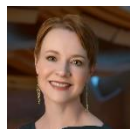
Kay Iwata

Founder & President
K. Iwata Associates, Inc.



Mari Miyoshi

President, Sumitomo Realty and Development U.S.A.
Owner of InterContinental Hotel Los Angeles Century City *at Beverly Hills*
President, Sumitomo Fudosan Hotel Villa Fontaine Co., Ltd. Japan



Rachel Moore

President & CEO
The Music Center



Yoko Narahashi
President, United Performer Studio
Producer, Director, Casting Director and Lyricist



Lori Nickel
Vice President, Senior Diversity Consultant
MUFJ Union Bank, N.A.



Robert A. Rivero
CEO, RAR Management Services LLC
Retired National Senior Partner, KPMG LLP



Kaori Sasaki
Founder & CEO, ewoman, Inc.
Founder & CEO, UNICUL International, Inc.
Founder and Chair, International Conference for Women in Business



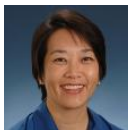
Adrianna Simmons
Solutions Marketing Manager, Industrial IoT
Hitachi Vantara



Rona Tison
Senior Vice President, Corporate Relations
ITO EN (North America) INC.



Kelly Keenan Trumpbour
Founding Venture Partner, NextGen Venture Partners
Founder, See Jane Invest



Julia Wada
Group Vice President, HR and Business Technology Solutions,
Toyota Financial Services
Director, Japan America Society of Southern California

About Japan America Society of Southern California

JASSC is a membership organization founded in 1909 to build economic, cultural, governmental and personal relationships between the people of Japan and America. It has grown to become the West Coast's premier educational and public affairs forum dedicated to the U.S.–Japan relationship. It is also the second largest of thirty-seven Japan America societies in the United States. JASSC is a qualified 501(c)(3) nonprofit, charitable and educational organization and it is supported by 140 Japanese and American corporate members and more than 2,000 individual members. www.jas-socal.org
(Tax ID 95-2021853)