

Women's Leadership Counts

Diversity Inspires Innovation: Entrepreneurial and Intrapreneurial Leadership

Moderator



RENEE WHITE FRASER, Ph.D.
Founder & CEO, Fraser Communications

Keynote Speakers



MICHIKO ACHILLES
Managing Corporate Officer
Vice President and Head of Human Resources
SAP Japan Co., Ltd.



KAORI SASAKI
Founder & CEO, ewoman, Inc.
Founder & CEO, UNICUL International, Inc.
Founder and Chair, International Conference for Women in Business

Tuesday, November 1, 2016

3:00–3:30pm Registration | 3:30–6:00pm Program
6:00–7:00pm Networking Reception

**InterContinental Los Angeles Century City
at Beverly Hills**

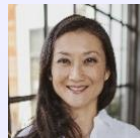
2151 Avenue of the Stars, Los Angeles, CA 90067

\$45 Members | \$55 Non-Members |
\$100 Admission *plus* NEW one year JASSC
Individual Membership (\$75 value)

Register at www.jas-socal.org/Women or
call 310-965-9050 ext. 104

*Reservations cancelled less than 48 hours before the event will be
billed to the reserving party.*

Panelists



ELLEN CHEN
Co-Founder & President, Mendocino Farms



KELLY TRUMBOUR
Founding Venture Partner, NextGen Venture Partners
Founder, See Jane Invest

Women's Leadership Counts Initiative

In 2014, the Japan America Society of Southern California's Women's Leadership Counts Initiative was created as a first-of-its-kind initiative to provide a platform for women in business on both sides of the Pacific to engage in professional and leadership development.

2016 conference will bring together influential leaders from Japan and the U.S. to address the key factors and share the challenges that have contributed to their personal and business success, especially through Entrepreneurship and Intrapreneurship. You will gain the insights into your strengths and learn how to take your leadership potential to the next level. The networking reception will provide opportunities to connect with speakers and attendees from a broad range of industries.

Who Should Attend

Current and future corporate, business, academic, non-profit and entrepreneurial **women and men** leaders who value the U.S.-Japan collaboration and wish to expand their networks.

Presenting Partners

CONSULATE GENERAL OF JAPAN
in Los Angeles



Official Side Event of
World Assembly of Women 2016
Shine Weeks



Conference Sponsors



Cooperating Organizations

BizFed, Japan HR Society, Koyamada Foundation, National Association of Women Business Owners LA